

AGENDA

POLICY DEVELOPMENT AND REVIEW COMMITTEE MEETING

Date: Wednesday, 12 September 2018

Time: 7.00pm

Venue: Council Chamber, Swale House, East Street, Sittingbourne, Kent, ME10 3HT

Membership:

Councillors Mike Baldock, Cameron Beart, Monique Bonney, Andy Booth (Chairman), Tina Booth, Lloyd Bowen, Nicholas Hampshire, James Hunt (Vice-Chairman), Nigel Kay, Roger Truelove and Ted Wilcox.

Quorum = 3

Pages

1. Fire Evacuation Procedure

The Chairman will advise the meeting of the evacuation procedures to follow in the event of an emergency. This is particularly important for visitors and members of the public who will be unfamiliar with the building and procedures.

The Chairman will inform the meeting whether there is a planned evacuation drill due to take place, what the alarm sounds like (i.e. ringing bells), where the closest emergency exit route is, and where the second closest emergency exit route is, in the event that the closest exit or route is blocked.

The Chairman will inform the meeting that:

(a) in the event of the alarm sounding, everybody must leave the building via the nearest safe available exit and gather at the Assembly points at the far side of the Car Park; and

(b) the lifts must not be used in the event of an evacuation.

Any officers present at the meeting will aid with the evacuation.

It is important that the Chairman is informed of any person attending who is disabled or unable to use the stairs, so that suitable arrangements may be made in the event of an emergency.

2. Apologies for Absence and Confirmation of Substitutes

3. Minutes

To approve the Minutes of the Meeting held on 18 July 2018 (Minute Nos. 126 - 132) as a correct record.

[Link to Minutes](#)

4. Declarations of Interest

Councillors should not act or take decisions in order to gain financial or other material benefits for themselves or their spouse, civil partner or person with whom they are living with as a spouse or civil partner. They must declare and resolve any interests and relationships.

The Chairman will ask Members if they have any interests to declare in respect of items on this agenda, under the following headings:

(a) Disclosable Pecuniary Interests (DPI) under the Localism Act 2011. The nature as well as the existence of any such interest must be declared. After declaring a DPI, the Member must leave the meeting and not take part in the discussion or vote. This applies even if there is provision for public speaking.

(b) Disclosable Non Pecuniary (DNPI) under the Code of Conduct adopted by the Council in May 2012. The nature as well as the existence of any such interest must be declared. After declaring a DNPI interest, the Member may stay, speak and vote on the matter.

(c) Where it is possible that a fair-minded and informed observer, having considered the facts would conclude that there was a real possibility that the Member might be predetermined or biased the Member should declare their predetermination or bias and then leave the room while that item is considered.

Advice to Members: If any Councillor has any doubt about the existence or nature of any DPI or DNPI which he/she may have in any item on this agenda, he/she should seek advice from the Monitoring Officer, the Head of Legal or from other Solicitors in Legal Services as early as possible, and in advance of the Meeting.

Part B reports for the Committee to consider

5. Consultation to develop a draft Swale Cycling and Walking Policy Framework 2018 - 2022

1 - 22

The Committee is asked to consider the current consultation on the Swale Cycling and Walking Policy Framework 2018 - 2022.

The Cabinet Member for Regeneration, the former Deputy Cabinet Member for Regeneration, the Economy and Community Services Manager and the Economic Development Support Officer have been invited to attend for this item.

The Committee is asked to review and discuss the Committee's Work Programme 2018/19.

Issued on Tuesday, 4 September 2018

The reports included in this agenda can be made available in **alternative formats**. For further information about this service, or to arrange for special facilities to be provided at the meeting, **please contact DEMOCRATIC SERVICES on 01795 417330**. To find out more about this Committee please visit www.swale.gov.uk

Chief Executive, Swale Borough Council,
Swale House, East Street, Sittingbourne, Kent, ME10 3HT

This page is intentionally left blank

Policy Development and Review Committee	
Meeting Date	12 September 2018
Report Title	Consultation to develop a draft Swale Cycling and Walking Policy Framework 2018-2022
Cabinet Member	Cllr Mike Cosgrove, Cabinet Member for Regeneration
SMT Lead	Emma Wiggins
Head of Service	Charlotte Hudson
Lead Officer	Christopher Blandford and Lyn Newton
Key Decision	No
Classification	Open
Recommendations	1. The Policy Development and Review Committee considers and responds to the consultation on cycling and walking in Swale, which seeks the public's view on ways to promote these forms of transport and suggestions to develop appropriate facilities in the Borough.

1 Purpose of Report and Executive Summary

- 1.1. The report introduces and presents the current consultation on cycling and walking in Swale. The consultation commenced on the 10 August and will conclude on the 5 October 2018.
- 1.2 The findings of the consultation will be used, through consultation with the Swale Borough Council (SBC) Planning department and Kent County Council's (KCC) Highways department, to develop a new policy framework for cycling and walking in the borough.

2 Background

- 2.1 A *Swale Cycling Strategy 2013-2018* was prepared by Kent County Council and Swale Borough Council in 2013 with the support of the Swale Cycle Forum. The strategy set out fifteen cycle routes which subsequently supported the Swale Local Plan, through the *draft Swale Transportation Strategy*. As the cycling strategy is now reaching the end of its lifespan, it is an opportune time to update its content.
- 2.2 Swale Borough Council has influence over cycle route policy through the Joint Transportation Board (JTB) and in responding to consultations, whilst the construction of new routes and their long term maintenance is within the remit of Kent County Council. A policy framework would therefore establish a strategic direction for the next four years but will not constitute a commitment from the

Borough Council for incurring any costs for the construction or maintenance of potential routes.

- 2.3 Since the previous strategy was prepared, the Department for Transport has also indicated through its investment strategy (2017) that cycling and walking should be considered together where appropriate, potentially through shared-use routes.
- 2.4 The government also outlined that it will make over £1 billion available during the next five years to local bodies for investment in cycling and walking. A new policy framework will provide a basis, including plans for feasible routes, to bid for improvements, to walking and cycling infrastructure in Swale through the Local Enterprise Partnership (Local Growth Fund) and other transport funding awarded to Kent County Council (KCC) by the Department for Transport.
- 2.5 The development of a new policy framework is also a part of the *Visitor Economy Framework for Sittingbourne, Faversham and the Isle of Sheppey 2018-2023* which includes the action to increase destination infrastructure for shared use routes.
- 2.6 New walking routes are known to be in development as part of the *Visitor Economy Framework*, from Produced in Kent after a successful bid to the LEADER funding programme, and from Natural England who are seeking to improve coastal access. These potential new walks will be taken into account in the consultation, so as to ensure that opportunities to improve the connectivity of the network and partnership working are identified.
- 2.7 In order to complement other Council strategies and plans, the policy framework will be informed by both responses to this consultation and the policies in SBC's *Local Plan (Bearing Fruits 2031)*. Any actions in the framework will then contribute to the development of the next Local Transport Strategy which will support the implementation of the routes.
- 2.8 The policy framework will also draw on the findings of the 'Looking Ahead' consultation which is the earliest stage of public engagement on the next Local Plan and closed on Friday 8th June. The consultation included questions on a number of relevant areas including sustainable transport, congestion and air quality.
- 2.9 Going forward, the cycling and walking policy framework could potentially be an element of helping to develop, over time, more integrated cycling and walking routes. This could be achieved through helping to implement the policies in the adopted Local Plan in respect of designing new developments for cycling and walking; linking new developments to services and facilities; better links with leisure routes; and new ideas to promote cycling and walking in the town centres. It is anticipated that it would both inform and be informed by Local Plan and Local Transport Strategy Reviews, which in turn can provide the basis for funding bids.

3 Proposal

- 3.1 The Policy Development and Review Committee considers and responds to the consultation on cycling and walking in Swale, which seeks the public's view on ways to promote these forms of transport and suggestions to develop appropriate facilities in the Borough. The response will be used to help inform the development of the Swale Cycling and Walking Policy Framework 2018-2022.

4 Alternative Options

- 4.1 **Do nothing** – this is not recommended as potentially Swale could miss out on funding opportunities, which have the potential to improve cycling and walking in the Borough, both for the commute to work and school, and for leisure.
- 4.2 **Status Quo** – this is not recommended as the current strategy expires in 2018 but the Council could continue to rely on the proposed routes which accompany the current Local Plan (through the *Swale Transportation Strategy Draft 2014-2031*).

5 Consultation Undertaken or Proposed

- 5.1 The current consultation has been promoted through the [SBC website](#), social media, a press release, email marketing and through established walking and cycling groups. Copies of the consultation document have also been made available in public spaces such as local libraries. Efforts have also been made by SBC and KCC officers to contact cycling and walking stakeholder groups in Swale to get their informed view, including Natural England who are progressing their plans to improve coastal access in Swale.

6 Implications

Issue	Implications
Corporate Plan	<p>The proposed policy framework will contribute to the corporate priority of 'A Borough to be proud of', particularly the 'delivery of smaller-scale regeneration projects ... to improve the appearance and facilities of our towns and villages'. It will also contribute to creating 'a borough with a strong brand, which is recognised nationally and internationally for its advantageous business environment and for its wealth of visitor attractions.' Under this priority it will also contribute to the delivery of 'world-class multi-modal transport links which facilitate economic growth and enable residents from across the Borough to take advantage of it.'</p> <p>A contribution will also be made to the priority of 'A Community to be Proud of', particularly in a contribution to creating 'a community in which everyone plays their part in maintaining their own physical and mental wellbeing through healthy lifestyle choices'.</p>
Financial, Resource and	The proposed policy framework will not require any financial, resource or property commitments from Swale Borough Council as

Property	it seeks to create a basis to influence the development of a cycling and walking network in Swale. The routes identified will help to inform the planning process where developers fund routes as part of their section 106 commitments, for example, and to provide a basis for future bids for government funding and from other sources such as the Local Growth Fund which may be required for match funding.
Legal and Statutory	The provision of the consultation and the policy framework is not a statutory function of Swale Borough Council. Kent County Council has responsibility for the building of new routes, and SBC has influence through JTB, working in partnership and in responding to consultations. Any agreed plans for new routes will however form a part of the Local Plan which is a statutory document.
Crime and Disorder	The proposal does not have a direct impact on crime and disorder, but shared-use routes could help to tackle anti-social behaviour by creating a diversionary activity for young people.
Environmental Sustainability	None identified at this stage but an increase in the number of cycling and walking routes has the potential to decrease congestion in the borough and improve the air quality of Swale.
Health and Wellbeing	The policy framework will seek to develop the Swale cycling and walking network to provide more opportunities for residents to engage in physical activity either through their daily commute or leisure activities. In this way, the new facilities have the potential to contribute to the NHS recommendation that adults should do at least 150 minutes of moderate aerobic activity such as cycling or brisk walking every week.
Risk Management and Health and Safety	None identified for the consultation stage. Proposals for routes will be tested for feasibility by SBC and KCC Highways, which by necessity will take into account health and safety considerations.
Equality and Diversity	The consultation will not exclude any group on the basis of equality and diversity.
Privacy and Data Protection	The consultation will follow data protection law. A privacy notice has been used which is compliant with the Council's policies, the Data Protection Act and the General Data Protection Regulation (GDPR).

7 Appendices

7.1 The following documents are to be published with this report and form part of the report:

- Appendix I: *Developing a new Swale Cycling and Walking Policy Framework – Have Your Say*
- Appendix II: *Swale Cycling and Walking Policy Framework 2018-2022 – Consultation Questionnaire*

8 Background Papers

8.1 None.



SWALE

Cycling and walking framework

Consultation document
2018 – 2022



Introduction



Cllr. Mike Cosgrove
Cabinet Member for
Regeneration



Cllr. James Hunt
Deputy Cabinet Member
for Planning

We are holding a consultation this summer to ask you where you would like to see new cycling and walking routes in the borough, and how you think we can improve the current network.

Improvements to the cycling and walking network of Swale have the potential to greatly benefit the residents of our borough. Physical activity can have a proven positive effect on our wellbeing and health. In addition, by encouraging and improving walking and cycling links to the workplace and schools, it can benefit air quality and the local economy by reducing congestion on our roads. Perhaps most importantly, improvements can also make our infrastructure safer for both the daily commute and our leisure time.

Last February, we adopted A Visitor Economy Framework for Sittingbourne, Faversham and the Isle of Sheppey 2018-2023. We aim to increase the value of tourism to the local economy by 11.5%, and walks and cycle routes play an important role in broadening the appeal of our destinations. For example, new infrastructure can create opportunities for new and existing businesses to create facilities which improve visitor's dwell time such as bike hire schemes or walker's cafés.

After the consultation, the Borough Council will work with Kent County Council to develop a Cycling and Walking Policy Framework for Swale. The new framework will include policies and plans that work together to promote active travel and enable us to provide a basis for influencing the development of new routes. The routes identified will help to inform the planning process where developers provide funding for routes and provide a basis for future bids for government funding.

In this booklet we have included a summary of the current network and a copy of the questionnaire so that you can have your say. I encourage you to complete and return the form to us by the 5 October 2018, so that we can continue to improve the walking and cycling network in Swale.



Have Your Say

We are asking Swale residents and businesses to provide us with details of where they would like to see improvements to the local walking and cycling network.

We are at an early stage in developing our proposals and your views will help us decide how to progress with them. We look forward to hearing from you.

The consultation will run for eight weeks from 10 August 2018 to 5 October 2018.

How to give us your views

Complete the questionnaire at the end of this leaflet and hand it in to your closest Swale Borough Council office. These are:

- The Alexander Centre, 15-17 Preston St, Faversham, Kent ME13 8NZ
- Sheppey Gateway, 38-42 High Street, Kent, Sheerness ME12 1NL
- Swale House, East Street, Sittingbourne, Kent ME10 3HT

Visit the Swale Borough Council website or visit www.surveymonkey.co.uk/r/VMLSKBR and complete the questionnaire online.

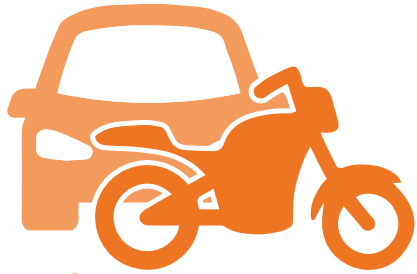
If you have any queries or would like this information in a different format please:

Email: cyclingandwalking@swale.gov.uk

Call: **01795 417850**



Overview



70% of those travelling to work in Swale either drive a car, van, motorcycle, scooter or moped to their workplace.

2011 Census



2% of those travelling to work in Swale and Kent use a bicycle.

2011 Census



12% of those travelling to work in Swale walk to work.

2011 Census



70% of adults in Swale report that they walk at least once a week.

Walking and Cycling Statistics, England: 2015-16



16% of adults in Swale report that they cycle at least once a month.

Walking and Cycling Statistics, England: 2015-16



The Cycle to Work Scheme generates at least £72 million in economic benefits for the UK economy in terms of health each year.

Institute for Employment Studies 2016

Funding

The policy framework will provide a basis for making bids for improvements to walking and cycling infrastructure in Swale through the Local Enterprise Partnership (Local Growth Fund) and other transport funding awarded to Kent County Council (KCC) by the Department for Transport. It is anticipated that it would both inform and be informed by the Swale Local Plan and Local Transport Strategy Reviews, which in turn can provide the basis for funding bids. Additionally, the policies and plans contained in the framework could help to secure support for walking and cycling from other possible funding streams such as developer funding via s106 obligations and the Community Infrastructure Levy (CIL).

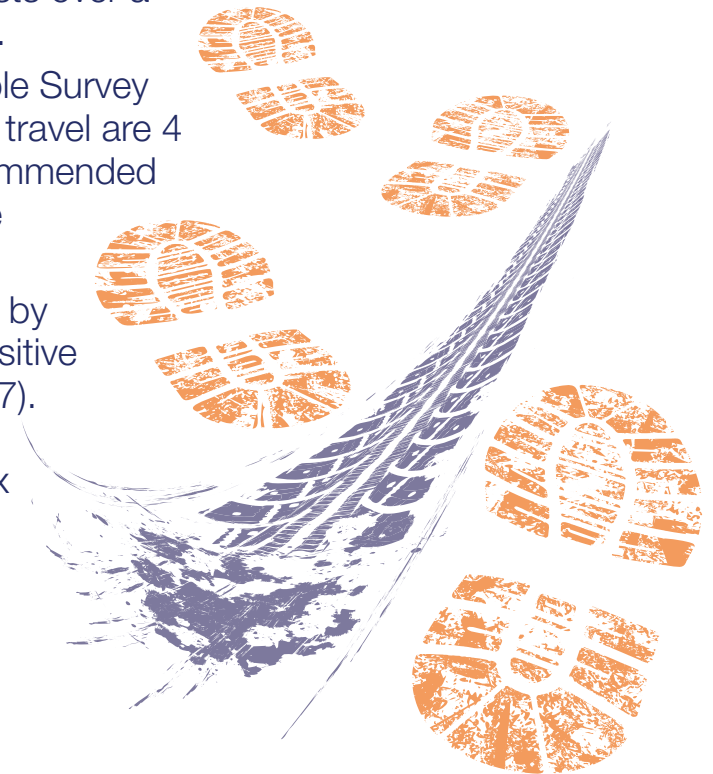
In the past, funding has been used to make small interventions which help to improve the network such as cycle parking and new routes to schools and workplaces.

Health benefits

Cycling and walking have proven benefits for the health and wellbeing of those who travel in these ways. Research suggests that:

- Increasing evidence has been found for a link between adult obesity levels and the amount of physical activity undertaken when travelling. For instance, western countries with the highest levels of active travel generally also have the lowest obesity rates (Bassett et al 2008).
- Switching to active travel for short motor vehicle trips could save £17bn in NHS costs over a 20 year period (Jarrett et al, 2012).
- Sport England's 2015 Active People Survey showed that people who cycle for travel are 4 times more likely to meet the recommended level of physical activity than those who do not.
- 30 minutes or more of commuting by foot or bicycle has a significant positive effect on mental health (Ohta, 2007).

Source: Sustrans' Active Travel Toolbox



Cycling Routes

Swale currently has three official cycle routes

- the National Cycling Route 1 passes through Faversham and Sittingbourne, partly following the route of the A2. The overall route connects Dover and the Shetland Islands;
- National Route 174 or 'The Sheerness Way' is a looped route which includes Barton's Point Coastal Park, the Queenborough Lines, and Sheerness Sea Front; and
- the Isle of Harty Trail is a flat, circular route which is mainly traffic-free. The route takes in local attractions such as Leysdown Beach and the RSPB Raptor View Point.

Cyclists can also make use of public bridleways but by law, those on two wheels must give way to other users. Walkers and cyclists can also use a number of shared-use paths in Swale which are free of motor traffic.

Cyclists can also use cycle lanes which are painted on the carriageway with a red surface and in some places green. The edge of the lane can have a solid white line which instructs drivers that they are not allowed to use it during its times of operation, or a dotted white line which instructs drivers that it will not be an offence if they enter the lane.

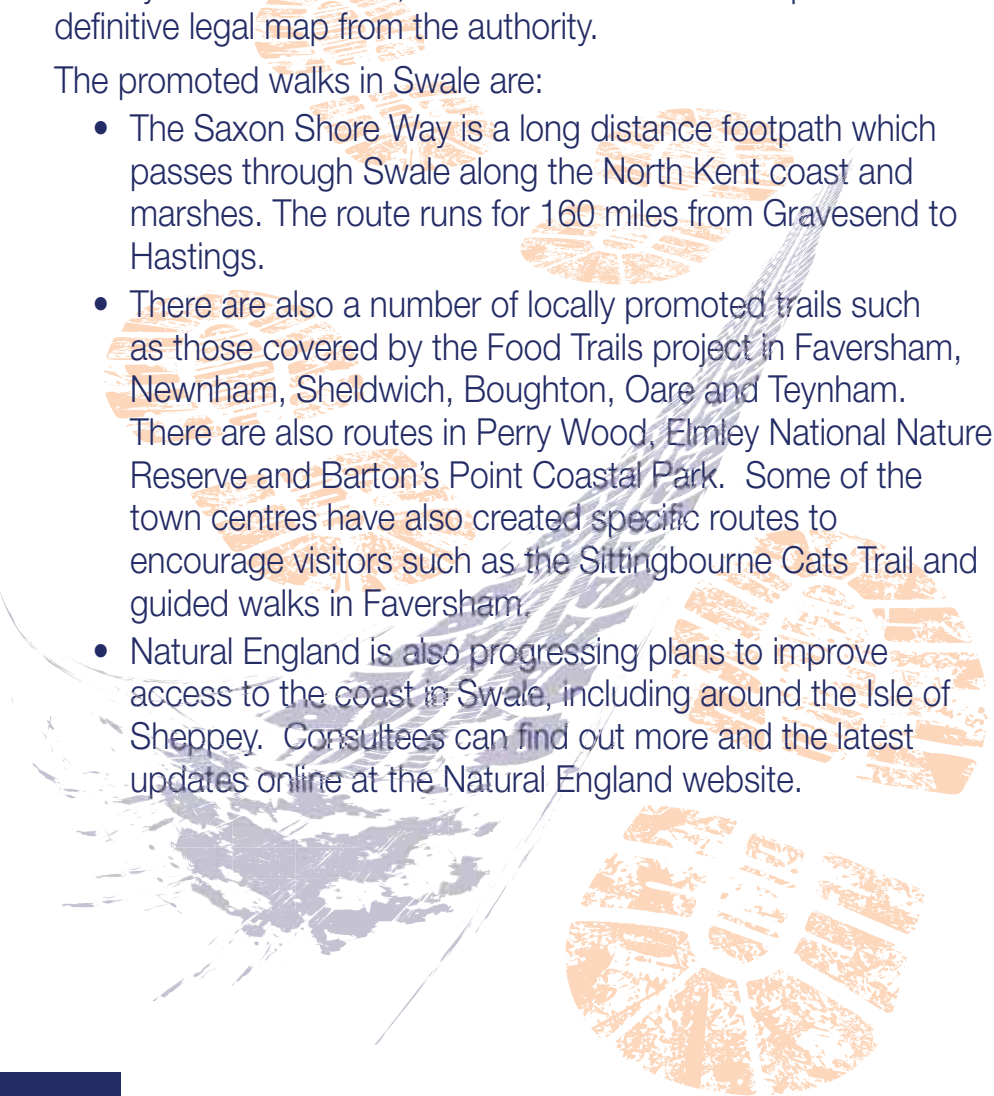
The new Swale Cycling and Walking Policy Framework will build on the research and feasibility completed for the routes included in the previous draft Swale Cycling Strategy 2014-2018. Maps of these potential routes can be viewed in the strategy which is available online.

Walking Routes

It is beyond the scope of this booklet to record all of the public rights of way which are open to walkers. Kent County Council have listed these routes on the Explore Kent Map on the Kent County Council website, and residents can also request a definitive legal map from the authority.

The promoted walks in Swale are:

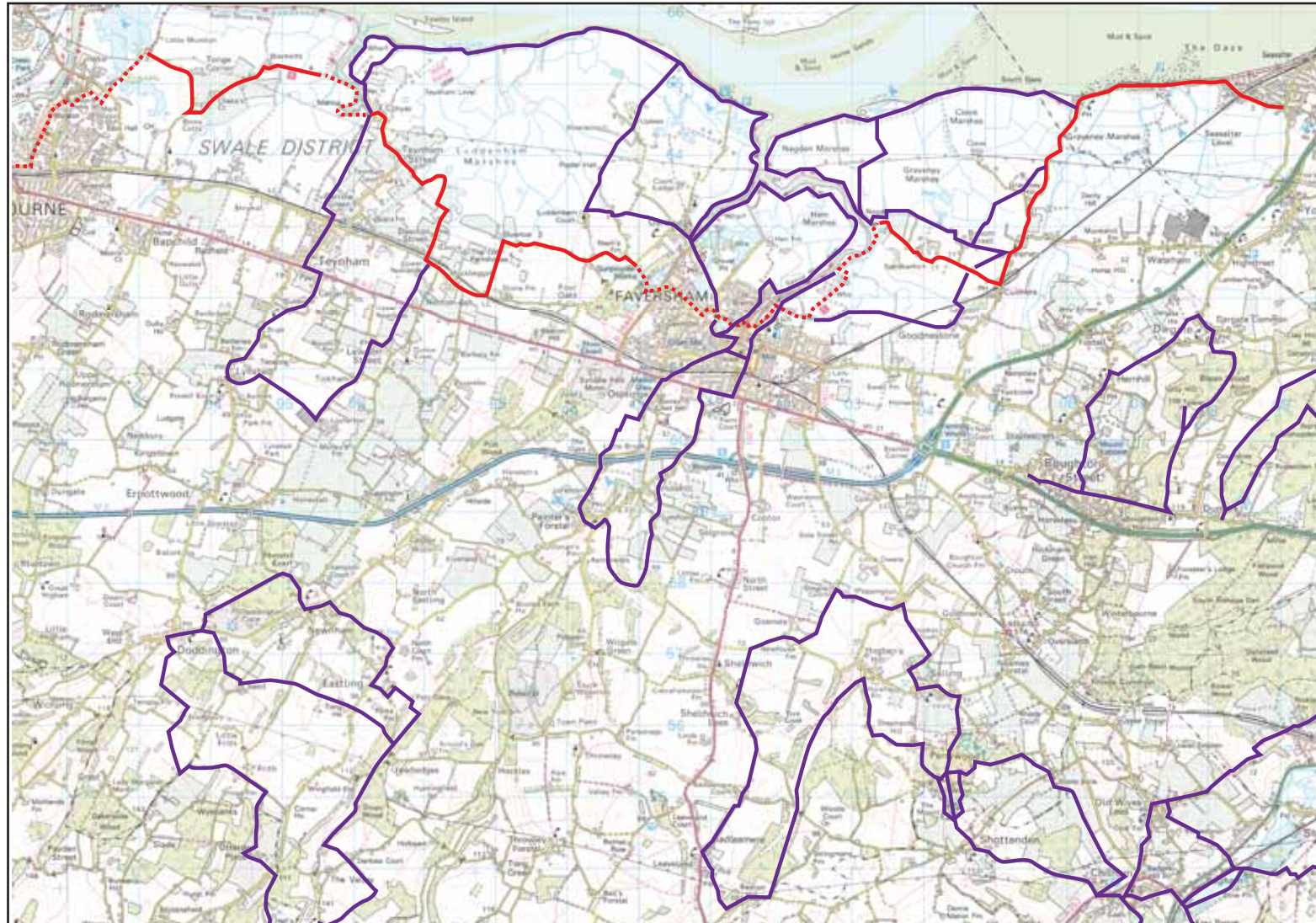
- The Saxon Shore Way is a long distance footpath which passes through Swale along the North Kent coast and marshes. The route runs for 160 miles from Gravesend to Hastings.
- There are also a number of locally promoted trails such as those covered by the Food Trails project in Faversham, Newnham, Sheldwich, Boughton, Oare and Teynham. There are also routes in Perry Wood, Elmley National Nature Reserve and Barton's Point Coastal Park. Some of the town centres have also created specific routes to encourage visitors such as the Sittingbourne Cats Trail and guided walks in Faversham.
- Natural England is also progressing plans to improve access to the coast in Swale, including around the Isle of Sheppey. Consultees can find out more and the latest updates online at the Natural England website.



Maps of Promoted Cycling and Walking Routes

These maps show cycle routes in red and locally promoted walks in purple.

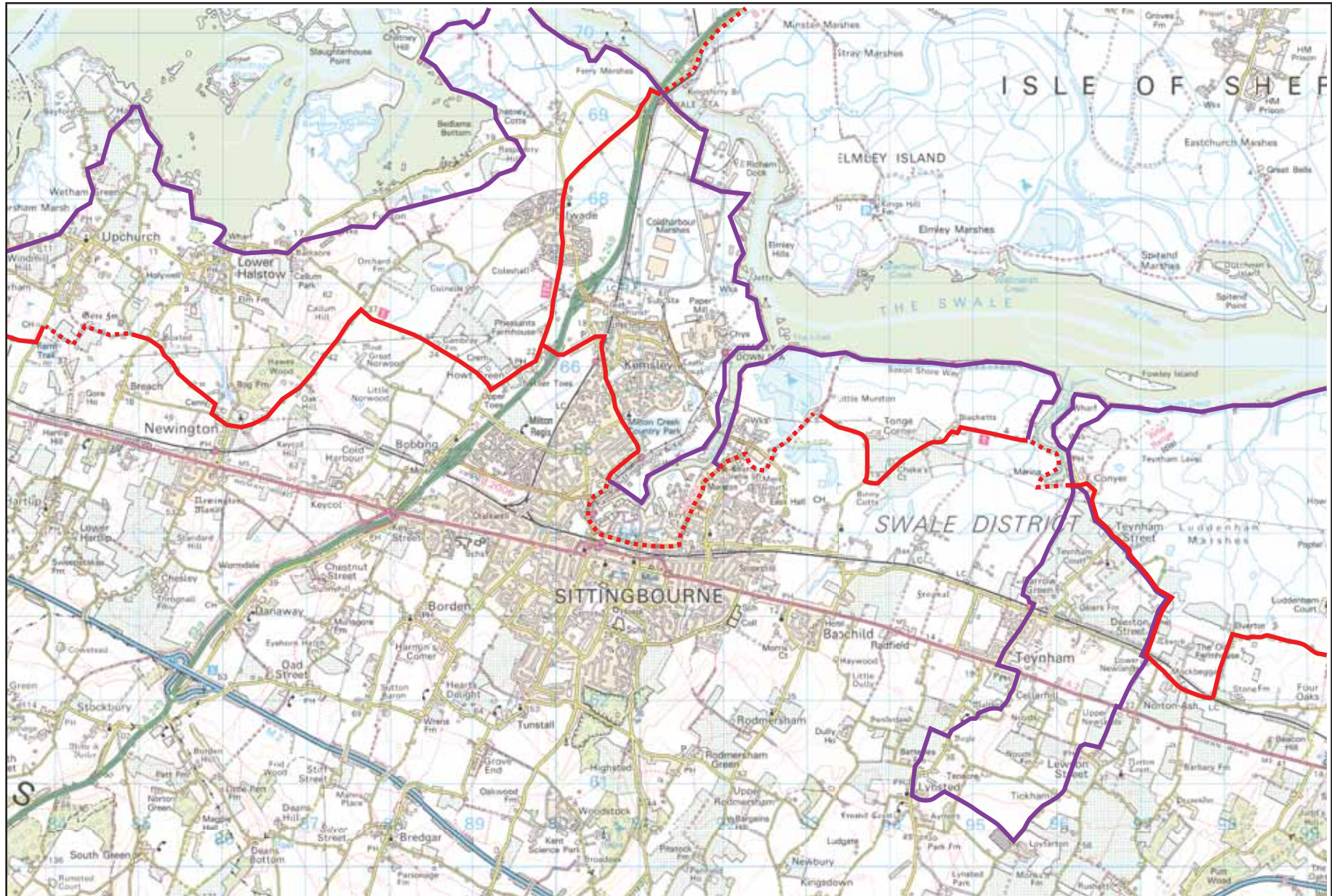
Faversham



Isle of Sheppey



Sittingbourne



National and Local Policy Overview

The **Department for Transport's Cycling and Walking Investment Strategy** (2017) is the main national strategic driver for the policy framework. The main ambition of the strategy is 'to make cycling and walking the natural choices for shorter journeys or as part of a longer journey.' The strategy emphasises a partnership approach to delivery and makes a commitment to supporting walking and cycling infrastructure improvements.

On a county level, a number of Kent County Council policies will provide guidance including:

- The **Active Travel Strategy** which will run until 2021. The overarching ambition of the strategy is to 'make active travel an attractive and realistic choice for short journeys in Kent'. To achieve this, the strategy aims to enable the delivery of three outcomes: improved health through an increase in physical activity; reduced congestion on the highway network by providing better travel choices and encouraging safer active travel.
- The **Local Transport Plan 4: Delivering Growth without Gridlock 2016-2031** which outlines the transport improvements proposed for Swale.
- The **Countryside and Coastal Access Improvement Plan** which aims to increase the use and enjoyment of Kent's public rights of way and open green space.



The cycling and walking network of neighbouring boroughs will also be taken into account so that, where feasible, new proposals connect or complement existing routes.'

On a borough level, the Swale Borough Council policies include:

- The **Visitor Economy Framework for Sittingbourne, Faversham and the Isle of Sheppey 2018-2023** which includes the priority to deliver public realm improvements which will lead to improved infrastructure and connectivity. Under this priority, there is also the action to increase destination infrastructure for shared use routes.
- The **Swale Active Lives Framework 2017-2022** where walking and cycling can contribute to the overall vision that, 'the residents of Swale are encouraged, motivated, informed and have the opportunity to be more active and healthier. Enabling them to live life to the full, be happy and well, reaching their full potential'.

- The **Swale Transportation Strategy 2014-2031** (draft) which aims to ‘encourage the use of sustainable means of travel as an alternative to the private car’.
- The **Local Plan (Bearing Fruits 2031)** is the most significant Swale Borough Council policy which considers cycling and walking routes. The key policies are:
 - **Policy Core Planning 2** outlines that planning applications must provide ‘integrated walking and cycling routes to link existing and new communities with local services and facilities, public transport and the Green Grid network’.
 - At the design level, **Policy Development Management 6** explains that location, design and layout for development proposals will demonstrate that, ‘priority is given to the needs of pedestrians and cyclists, including the disabled, through the provision of safe routes which minimise cyclist/pedestrian and traffic conflict within the site and which connect to local services and facilities’.



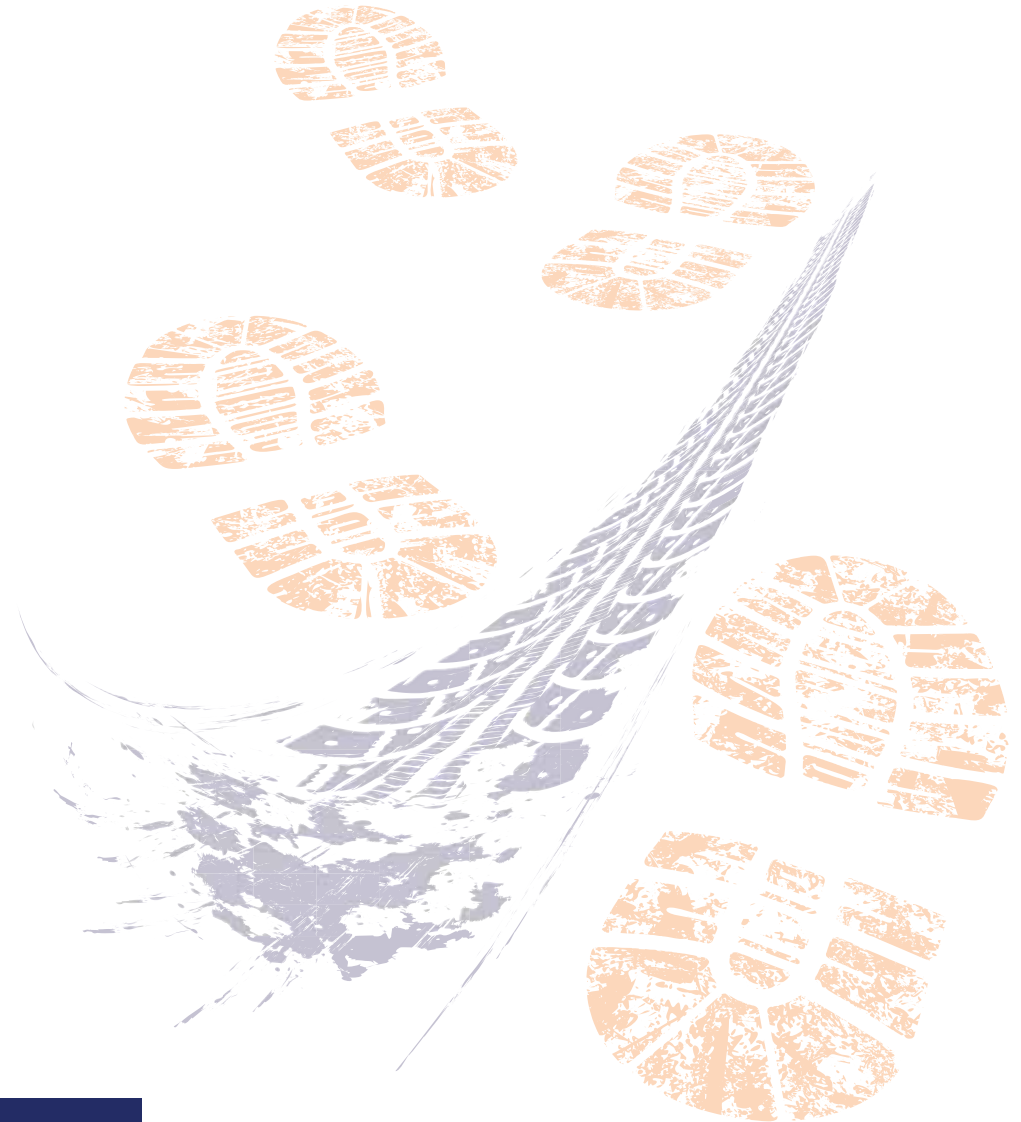
A number of allocations in the Local Plan also include consideration for cycling and walking provision, including:

- **Faversham:** the Oare Gravel Workings, Oare Road; land at Western Link, Faversham; land north of Graveney Road; land at Preston Fields and Perry Court Farm.
- **Isle of Sheppey:** land west of Barton Hill Drive, Minster.
- **Sittingbourne:** A249/Grovehurst Junction improvements; Iwade expansion; land at south-west Sittingbourne; land at Frognal Lane, Teynham; land at Frognal Lane, Teynham; Stones Farm, Canterbury Road; land at Crown Quay Lane and Milton Pipes, Mill Way.



Contacting Swale Borough Council

To request hard copies of any of the consultation documents or for any alternative formats, please email cyclingandwalking@swale.gov.uk or call 01795 417165.



Swale Cycling and Walking Policy Framework 2018-2022

10 August to 5 October 2018 - Consultation Questionnaire

Swale Borough Council's Cycling and Walking Policy Framework Consultation aims to find out where you would like to see new cycling and walking routes in the borough, and how you think we can improve the current network.

Please complete as many of the questions below as possible and please feel free to continue on an additional piece of paper if necessary.

This questionnaire can be completed online at www.surveymonkey.co.uk/r/VMLSKBR.

Alternatively, if you are completing this questionnaire by hand, please return it to any Swale Borough Council office or post it to Cycling and Walking Consultation, Economic Development, Swale Borough Council, East Street, Sittingbourne, Kent ME10 3HT by **5 October 2018**.

We look forward to hearing from you.

1. Where would you like to see a new cycling route in Swale?

2. Where would you like to see a new walking route in Swale?

3. Is there adequate secure parking at these locations?

4. Are there any current cycling or walking routes which you feel need to be improved or upgraded? If so, please explain in the box below.

5. What do you feel would most help you to consider cycling or walking to work or school?

6. Do you have any other suggestions for alternative measures or facilities which could encourage cycling and walking (such as bike hire schemes)?

7. Do you have any additional comments to make about cycling and walking in Swale?

8. Have you made at least one active travel journey or part journey in the last week?

9. Have you made at least one active travel journey or part journey by bicycle in the last week?

Please tell us your postcode or street name: _____

We will use your postcode or street name to help us to analyse the data collected in this survey. It will not be used to identify who you are.

Privacy Notice and Request for Permission

The information you are being asked to provide is controlled by Swale Borough Council (SBC). The lawful basis for processing your personal data is on the grounds of individual consent for your contact information to be included on a database for the purpose of consulting with you.

How we will use your information

We would like to contact you from time to time throughout the process of preparing the Swale Cycling and Walking Policy Framework 2018-2022. The framework preparation involves a number of formal and informal consultation stages and allowing us to hold your information will facilitate your participation in this process.

How we will store you information

Your information will be stored securely within SBC's computer systems.

How we will share your information

Your personal information will not be shared with anyone outside of Economy and Community Services at SBC. It will only be seen by SBC when distributing the consultation documents and processing and considering the consultation responses. The Council will reveal only an identification number which cannot be linked outside of SBC to your personal data. Please note that if you have completed the organisation box, we may associate your response with this organisation in the published results of this survey.

How long we will keep your information for

If you have consented to us processing your contact details, we will use it to contact you in relation to the development of the Swale Cycling and Policy Framework 2018-2022 carried out by the Economy and Community Services Department at SBC. The contact information held will be reviewed in 1 year to ensure the details are correct and that you wish to remain on the database. If you do not consent for your personal data to be held on the database, SBC will delete your contact details by **31st October 2018**.

Your Rights

1. You have the right at any time to request details of the personal information SBC has about you.

2. You have the right at any time to ask for your information held about you to be corrected if necessary.
3. You have the right to ask SBC to delete the personal information it holds about you.
4. You have the right to restrict processing of your information to this consultation only or to restrict its use in any other way you specify.
5. You have the right to ask for your personal data to be transferred to another organisation in an appropriate format.
6. You have the right to object to the personal data we hold about you being used for other purposes.
7. You have the right to withdraw at any time any consents and permissions you have given to SBC in connection with this consultation.
8. You have the right to complain if you think your personal information has not been handled correctly.

To exercise any of the above rights please contact SBC at the following email address: dpo@swale.gov.uk

You have the above rights but some of the rights are not absolute and there may be a legal reason why we cannot comply with your request.

Permissions

We need permission to store your information and contact you for your views until the development of the Swale Cycling and Walking Policy Framework 2018-2022 has been completed.

I consent to SBC storing my personal details: **YES** **NO**

I wish to be contacted by post: **YES** **NO**

I wish to be contacted by email: **YES** **NO**

Please supply us with your name, organisation and address (if applicable)

Please supply us with your email address (if applicable):

Please tick to confirm you are over 18:

How to respond

Please email this completed questionnaire to cyclingandwalking@swale.gov.uk or send to: **Cycling and Walking Consultation, Economic Development, Swale Borough Council, East Street, Sittingbourne, Kent ME10 3HT.**

Alternatively you may hand it in to your closest Swale Borough Council office at:

- The Alexander Centre, 15-17 Preston St, Faversham, Kent ME13 8NZ
- Sheppey Gateway, 38-42 High Street, Kent, Sheerness, ME12 1NL
- Swale House, East Street, Sittingbourne, Kent ME10 3HT.

This page is intentionally left blank

Policy Development and Review Committee - Policies, plans and strategies due for review in 2018/19

Policies, plans and strategies	Service unit	Due date for publication of new/revised policy, plan or strategy	Policy Development and Review Committee dates	Commentary
Cycling and walking strategy	Economy and Community Services	Autumn/winter 2018	12 September 2018	Committee will consider consultation draft
Beach Hut Policy	Commissioning and Customer Service	Spring 2018	24 October 2018	
Corporate Plan review	Policy and Performance	TBA	27 November 2018	To consider further iteration following discussions with Cabinet Members, Group Leaders and Heads of Service
Update Tree Policy	Commissioning and Customer Service	Spring 2018?	27 November 2018	
Swale Heritage Strategy	Planning Services	Autumn 2018	16 January 2019	Covers areas wider than just Planning Policy. PDRC to consider non-planning aspects prior to Local Plan Committee
Homelessness and Housing Strategy	Resident Services	Spring 2019	?	Out to tender for a consultant until 10 September. Project set for 6-8 months, therefore likely delivery Mar – May 2019
Housing Allocations Policy	Resident Services	?	?	
Refresh Complaints Strategy	Commissioning and Customer Contact	Autumn 2018	?	Service Plan action
Regeneration in Sheerness	Economy and Community Services	?	?	Service Plan action

Policy Development and Review Committee dates 2018/19:

- 12 September 2018;
- 24 October 2018;
- 27 November 2018;
- 16 January 2019; and
- 12 February 2019.